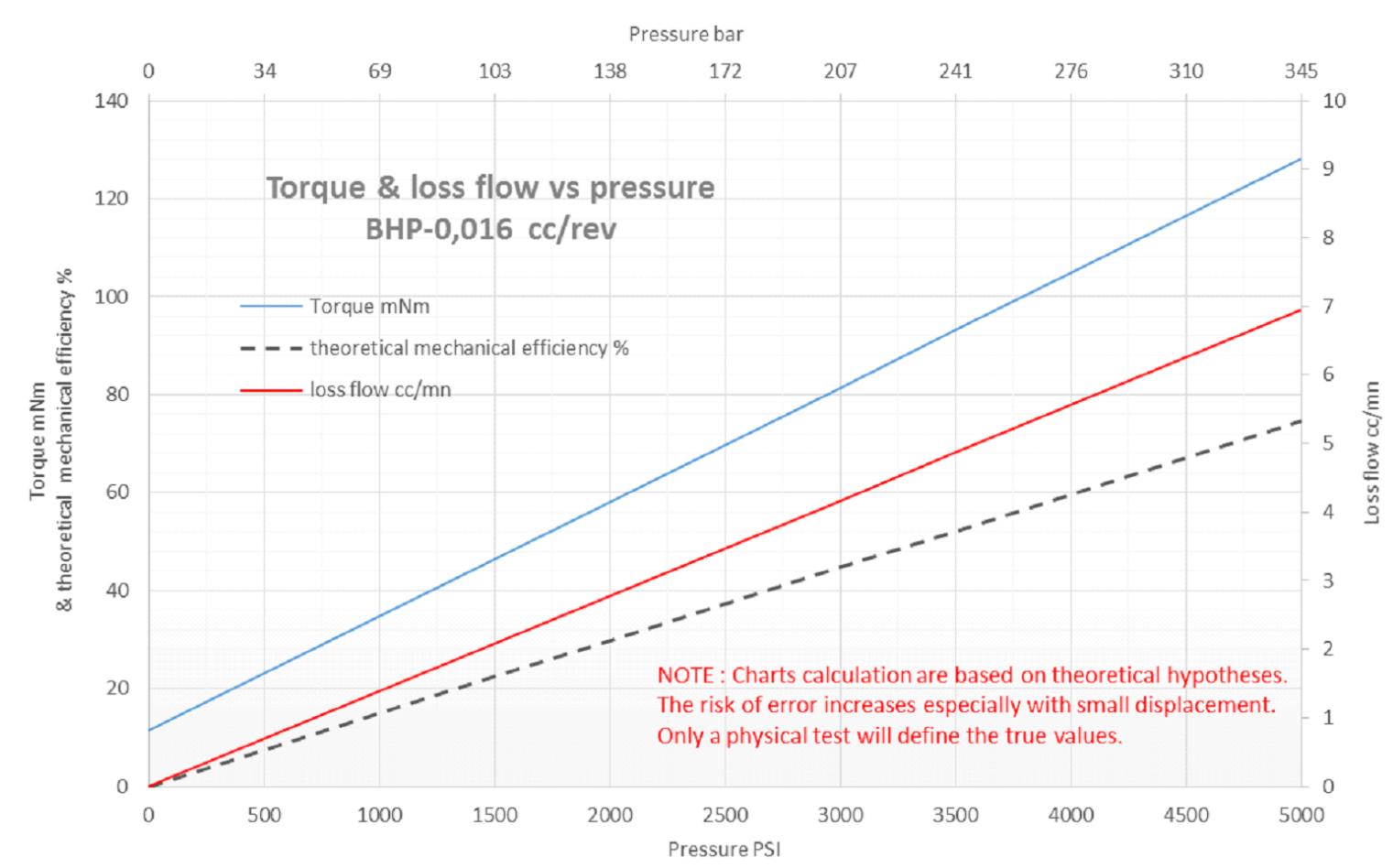
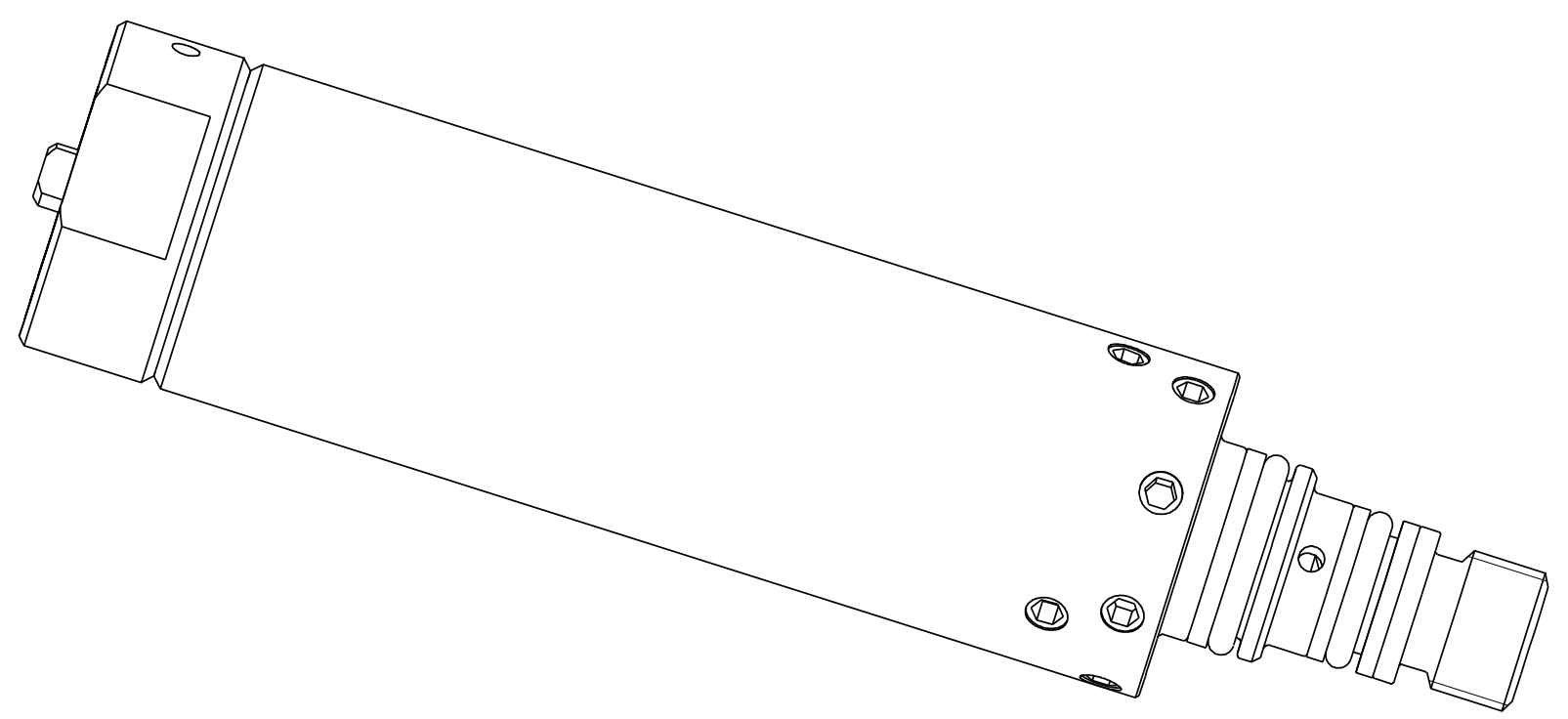
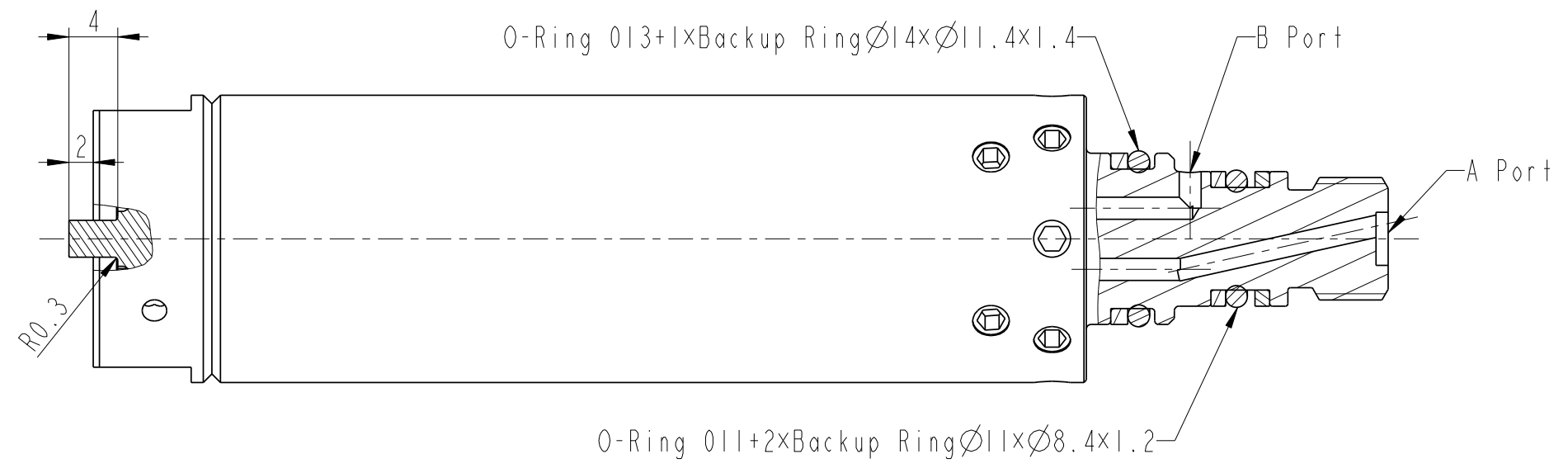
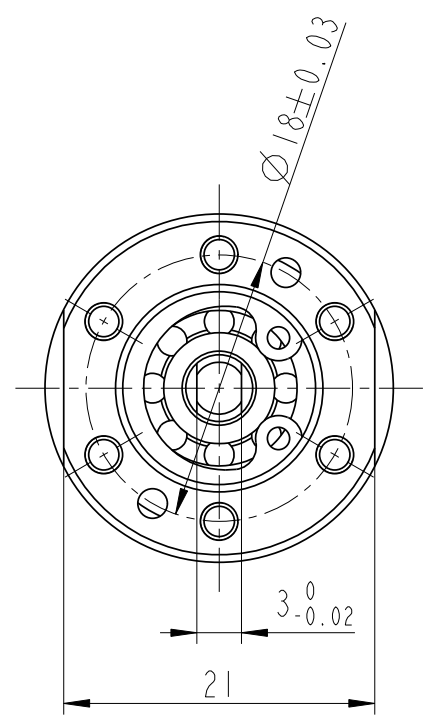
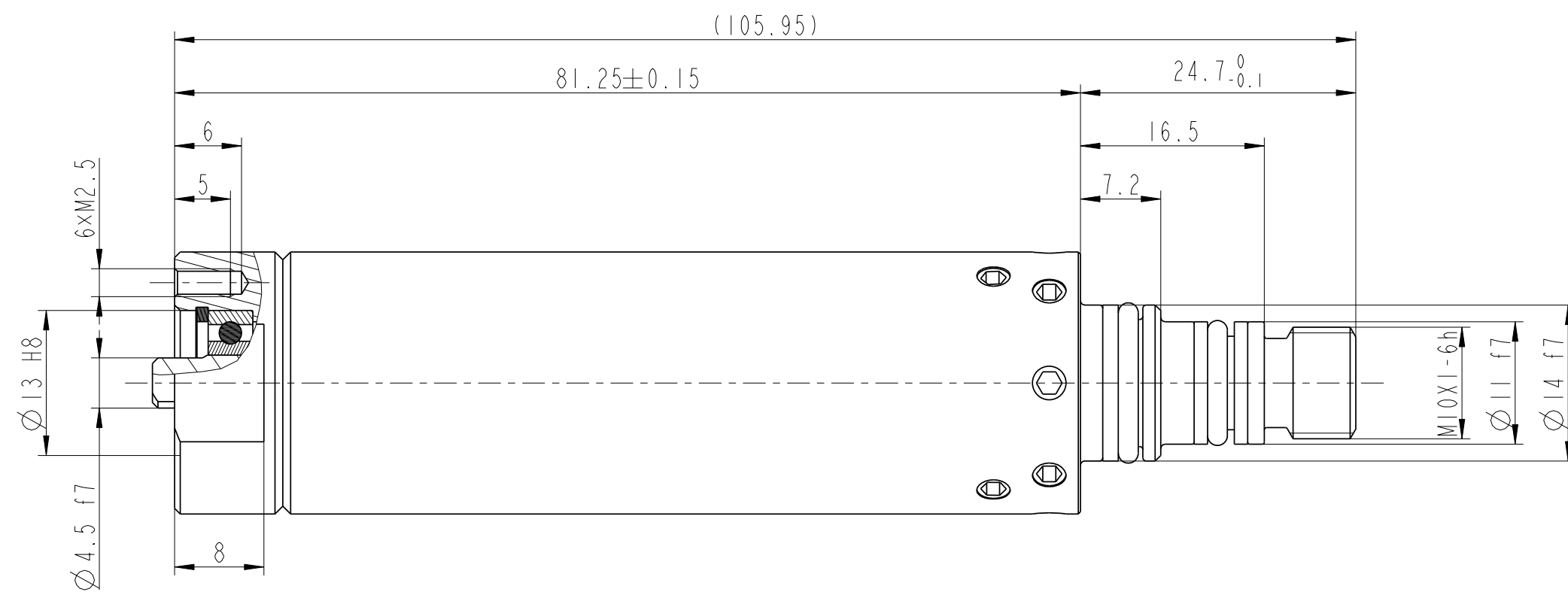




REVISIONS						
ZONE	REV.	DESCRIPTION	DRAWN	CHECKED	APPROVED	DATE
	A	Creation	VIOPU			01/06/2019



TECHNICAL DATA	
nominal displacement	0.016 ccm/rev
max. outlet pressure	300 bar
peak pressure	350 bar
operating temperature	-20°C ... 175°C
rotation speed	5000 rpm
top rotation speed	6000 rpm
minimum suction pressure	-0.55 bar
number of pistons	6
fluid cleanliness: NAS 1638 Class 8	

UNLESS OTHERWISE SPECIFIED: DIMENSIONS ARE IN INCHES		MATERIAL	TITLE: <b>VIOPU</b> BiDirectional Pump VP-AO23		
TOLERANCES: .X ±.03 (0.76 mm) .XX ±.01 (0.25 mm) .XXX ±.004 (0.13 mm) .XXXX ±.0005 (0.013 mm)	SHARP EDGE : .003 to .01 BREAK (0.075 - 0.25 mm)		TREATMENT	SIZE	DWG. NO.
ANGLES ± 0.5°		FINISH		C	VP-AO23
PROPRIETARY AND CONFIDENTIAL THE INFORMATION CONTAINED IN THIS DRAWING IS THE SOLE PROPERTY OF VIOPU. ANY REPRODUCTION IN PART OR AS A WHOLE WITHOUT THE WRITTEN PERMISSION OF VIOPU IS PROHIBITED.		DO NOT SCALE DRAWING	SCALE: 2:1 *WEIGHT: 0.54 lbs		SHEET 1 OF 1

**WNO PRU**